

Questionnaire
Vacuum lifting devices Jumbo
to create a quote

Schmalz Inc.
5250-150 Old Wake Forest Rd
Raleigh, NC 27609
Tel (919) 713-0880
Fax (919) 713-0883
http://www.schmalz.com/us
e-mail: info@schmalz.us



Company: Name: Street: City/State/zip:	Email..... Tel:-.....-..... Fax:-.....-..... Date(m/d/y):	End User
Schmalz internal quote number:		

Workpiece:

1.1 Handling of (workpiece description): _____

1.2 Material: _____

2. Dimensions and weight of workpieces:

	Length	Width	Thickness	Weight
Maximum				
Minimum				

2.1 Cross-sectional profile: round flat profile: _____

3. Surface texture: rough structured smooth

4. Special characteristics of the workpiece (e.g. holes, apertures, etc.; enclose drawing if necessary):

5. Surface quality (pollution): none dry wet
 oily dusty _____

6. Porosity: non-porous slightly porous very porous
 must be determined by testing (send sample to Schmalz)

7. Temperature: workpiece: _____ (°C / °F) environment: _____ (°C / °F)

Handling:

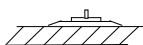
8. Working range -Height at which workpiece is picked up: max: _____
min: _____ .

-Height at which workpiece is released: max: _____ min: _____ .

9. Room height _____ (Indicate max. available clear height from floor to lowest unmoveable obstructions).

10. Type of handling:

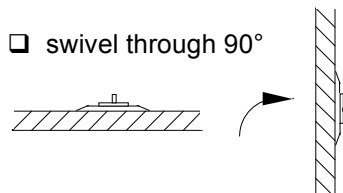
horizontal



vertical



swivel through 90°



Questionnaire
Vacuum lifting devices Jumbo
to create a quote

Schmalz Inc.
5250-150 Old Wake Forest Rd
Raleigh, NC 27609
Tel (919) 713-0880
Fax (919) 713-0883
http://www.schmalz.com/us
e-mail: info@schmalz.us



11. Frequency of the handling operation: _____ cycles per hour
12. Sketch of handling operation (enclose if necessary):

Power Supply:

13. Electrical supply _____ V _____ Hz AC DC three-phase current
Existing cable connection: 3-wires 4-wires 5-wires
14. Compressed air supply: available: _____ PSI _____ CFM

Crane system:

15. Crane: existing requested →
 freestanding jib crane: Span of jib: _____ ft
 wall-mounted jib crane: Span of jib: _____ ft
 ceiling mounted bridge crane: -runway length: _____ ft
-bridge length: _____ ft
 freestanding bridge crane: -runway length: _____ ft
-bridge length: _____ ft

Miscellaneous:

16. Coating: RAL 7035 light grey (standard) RAL _____
17. Options: Motor starter switch for off/on control of blower (normally included)
 radio remote control for wireless activation and deactivation of blower.
 vacuum gauge to check operating status (info only – not for safety)
 silencer box to reduce the blower noise level from 72 to 65 dB(A).

Schedules:

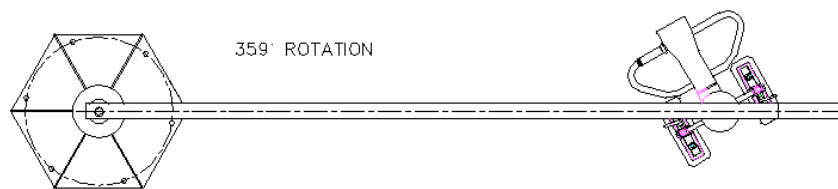
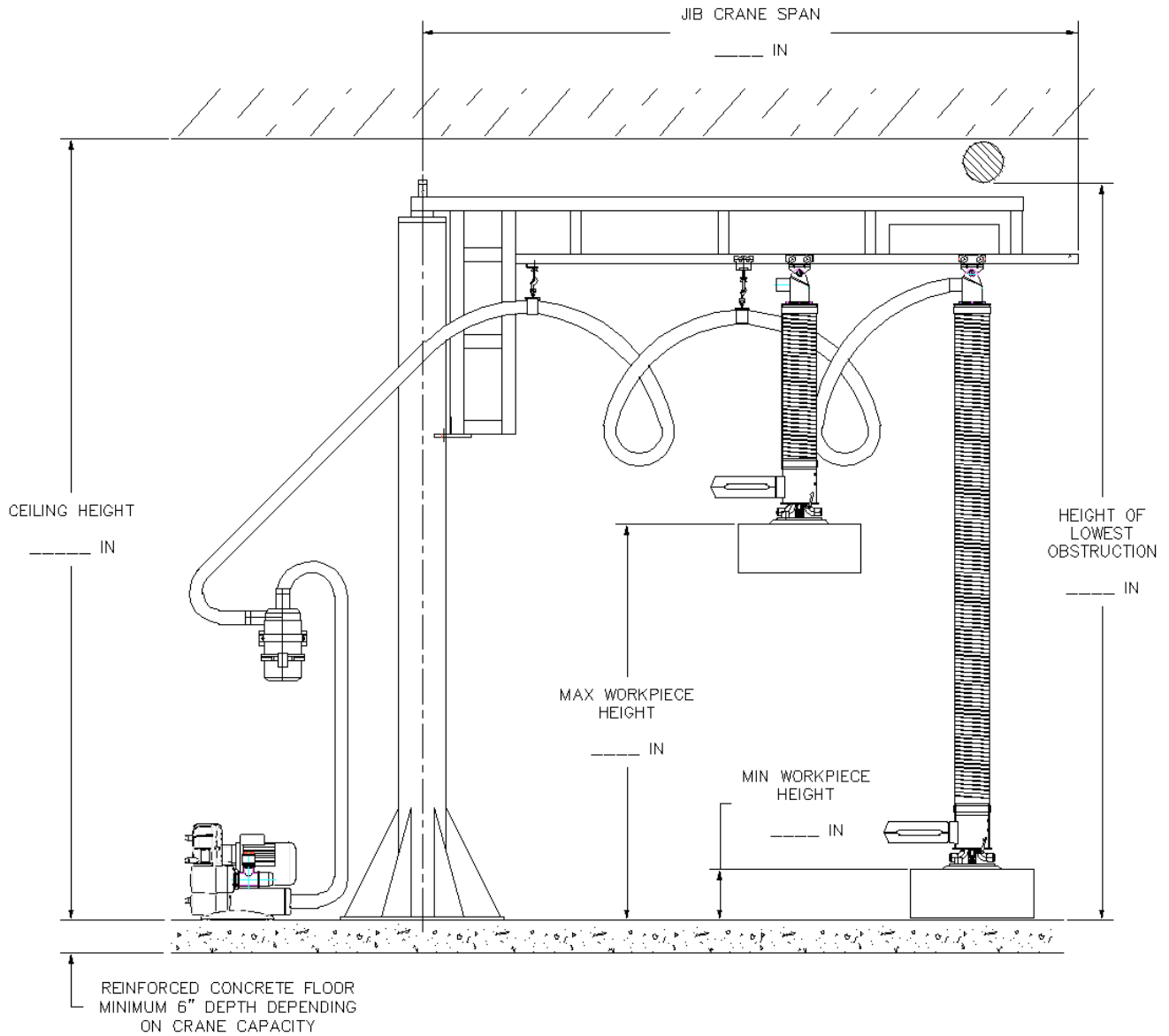
18. Request for information only, no information available about implementation dates. yes no
19. Order already exists for the complete equipment? yes no
20. Order will be placed approximately: _____
21. Project will be implemented approximately: _____
22. Enclosed: Questionnaire crane system Workpiece sketch
 Sketch of handling operation _____

Dealer Information:

Company:	Email:	Dealer
Contact:	Tel:	
Street:	Fax:	
City/State/zip:	Date(m/d/y):	

Questionnaire
Vacuum lifting devices Jumbo
to create a quote

Schmalz Inc.
5250-150 Old Wake Forest Rd
Raleigh, NC 27609
Tel (919) 713-0880
Fax (919) 713-0883
<http://www.schmalz.com/us>
e-mail: info@schmalz.us



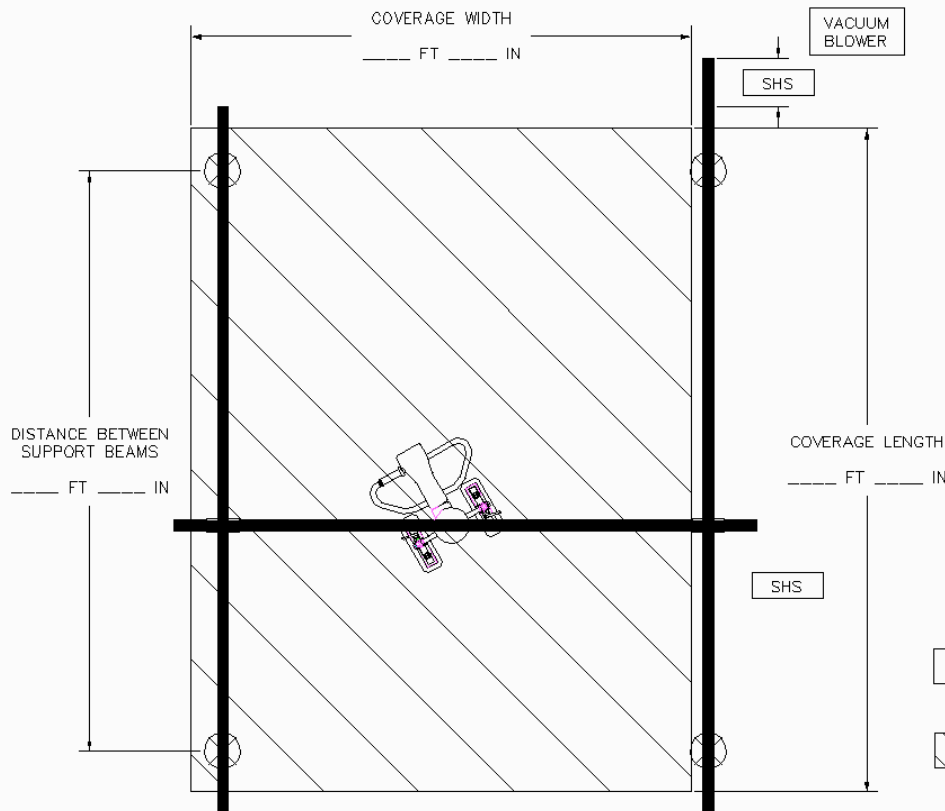
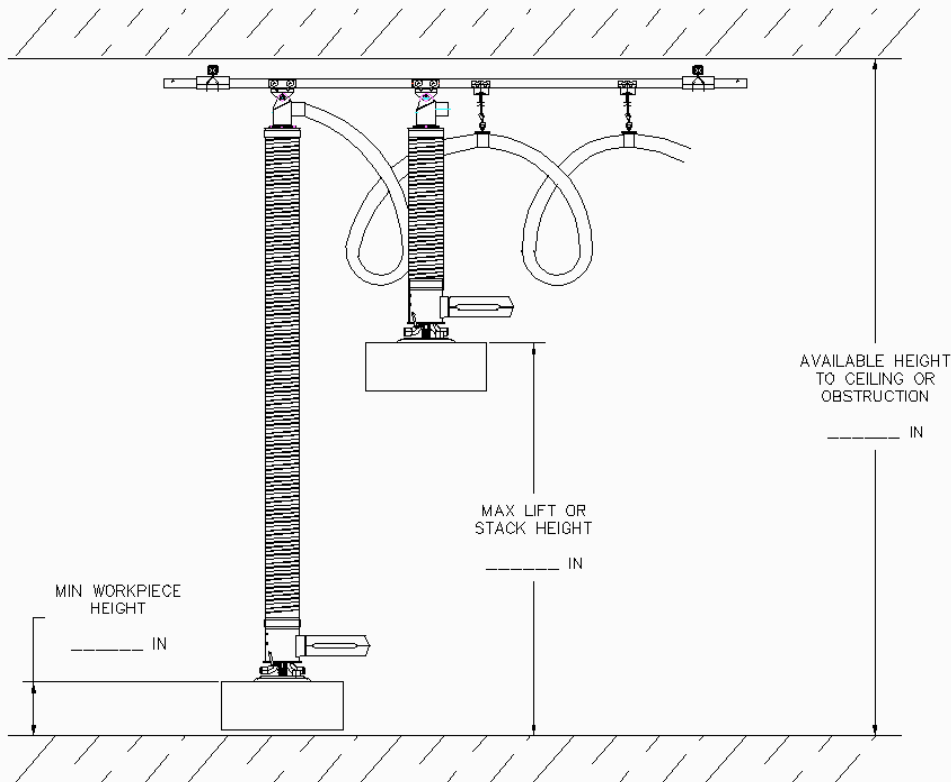
The illustration above shows a complete tube lifter system as an example.

Consists of:

- Vacuum blower
- Dust filter
- Lifting unit
- Ergo twist-grip control handle
- Suction pad
- Freestanding jib crane

Questionnaire
Vacuum lifting devices Jumbo
 to create a quote

Schmalz Inc.
 5250-150 Old Wake Forest Rd
 Raleigh, NC 27609
 Tel (919) 713-0880
 Fax (919) 713-0883
 http://www.schmalz.com/us
 e-mail: info@schmalz.us



Note: Coverage is lost on suction hose stack-up side of bridge. Hose stacks up in a separate section on the runway (on vacuum blower end).

- SHS SUCTION HOSE STACK-UP SIDE
- COVERAGE AREA